

ROHO®

MINI-MAX®,

PACK-IT®,

Recliner System

Operation Manual

permobil

s h a p e f i t t i n g t e c h n o l o g y®

Contact Information



ROHO, Inc.
1501 South 74th St.
Belleville, IL 62223 U.S.A.

U.S.A.:
800-736-0925
Fax 888-551-3449

Customer Support:
orders.roho@permobil.com

Outside the U.S.A.:
618-277-9150
Fax 618-277-6518
intlorders.roho@permobil.com
permobil.com



Warning

Indicates that not following the specified procedure could lead to potentially hazardous conditions resulting in serious injury.



Caution

Indicates that not following the specified procedure could lead to potentially hazardous conditions resulting in minor to moderate injury or damage to the equipment or other property.

Incident Reporting

In the event of a serious incident or injury, contact Customer Support.

Contents

Intended Use	2-3
Important Safety Information	
Parts Detail	4
Product Specifications	
MINI-MAX	5
PACK-IT	
Recliner System	6
Cleaning and Disinfecting	7-8
Troubleshooting	9
Storage, Transport, Disposal and Recycling	
Limited Warranty	
Español	10
Français	19
Português	28

Symbols Glossary

	Manufacturer		Quantity		Size (width x depth x height)		Front of product
	Date of manufacture		Model number		Medical Device		Back of product
	Consult instructions for use		Serial number		Batch code		Bottom of product
	Meets flammability		Fits		Cleaning instructions		Disinfecting instructions

Please Note

Supplier: This manual must be given to the user of this product.

Operator (Individual or Caregiver): Before using this product, read the instructions and save for future reference.

Products may be covered by one or more U.S. and foreign patents and trademarks, including ROHO®, DRY FLOATATION®, MINI-MAX®, PACK-IT®, Yellow Rope® and shape fitting technology®. Zytel® is a registered trademark of DuPont.

Product information is changed as needed; current product information is available at permobil.com. Contact Customer Support for previous versions of product information.

ROHO, Inc. is part of Permobil.

© 2007, 2022 Permobil

Rev. 2022-08-17

Intended Use

The ROHO MINI-MAX Cushion (MINI-MAX) is an adjustable, air-filled, cellular-design, neoprene surface intended as a supplemental seating surface. There is no weight limit, yet the cushion must be properly sized to the individual.

The ROHO PACK-IT Cushion (PACK-IT) is an adjustable, air-filled, cellular-design, neoprene surface intended for short-term cushioning needs. There is no weight limit, yet the cushion must be properly sized to the individual.

The ROHO Recliner System (Recliner System) is an adjustable, air-filled, cellular-design, support surface that utilizes DRY FLOATATION technology and is intended to conform to an individual's seated shape to provide localized skin/soft tissue protection and an environment to facilitate wound healing. There is no weight limit, yet the cushion must be properly sized to the individual.

An experienced clinician should determine whether the product is appropriate for the individual's particular equipment needs. The product's intended use statement alone should not be relied upon to make that determination.

The medical products featured in this document are intended to be only one part of an overall care regimen that includes all therapeutic equipment and interventions. An experienced clinician should identify this care regimen after evaluating the individual's physical needs and overall medical condition.

A clinician should also evaluate for visual, reading, and cognitive impairment to determine the need for caregiver assistance or the need for other assistive technology, such as large-print instructions, to ensure proper product use.

Important Safety Information



Warnings:

- If you are unable to perform any tasks described in this manual, seek assistance by contacting the clinician, equipment provider, distributor, or Customer Support.
- Check inflation frequently, at least once a day!
- Skin/soft tissue breakdown can occur due to a number of factors, which vary by individual. Check skin frequently, at least once a day. Redness, bruising, or darker areas (when compared to normal skin) may indicate superficial or deep tissue injury and should be addressed. If there is any discoloration to skin/soft tissue, STOP USE immediately. If the discoloration does not disappear within 30 minutes after disuse, immediately consult a clinician.
- DO NOT place obstructions between the individual and the cushion. The cushion and the cover MUST be compatible sizes and MUST be used as directed in this manual. Except for the compatible covers listed in "Product Specifications" in this manual, placement of any items between the individual and the cushion: 1) may reduce or eliminate the benefits of the cushion, increasing the risk to skin or to other soft tissue, and 2) may cause the individual to become unstable and vulnerable to falling.

Important Safety Information, continued



Warnings:

- DO NOT use the cushion on top of, or in conjunction with, any other products or materials, except as indicated in this manual. Using non-compatible products or materials, whether inside or outside the cover: 1) may reduce or eliminate the benefits of the cushion, increasing the risk to skin or to other soft tissue, and 2) may cause the individual to become unstable and vulnerable to falling.
- The cushion surface will acclimate to the surrounding temperature. Take appropriate precautions, especially when the cushion will contact unprotected skin.
- DO NOT use the cushioning device as a water flotation device (e.g., a Life Preserver). It will NOT support you in water.
- Use caution when skin will contact the seating surface. Tissue damage may result from increased friction.
- DO NOT use an under-inflated cushioning device or an over-inflated cushioning device because the product benefits will be reduced or eliminated, resulting in an increased risk to skin and other soft tissue. If the cushioning device does not appear to be holding air, or if you are not able to inflate or deflate the cushioning device, see "Troubleshooting". Immediately contact the clinical caregiver, distributor, or Customer Support if the problem persists.
- Use caution when handling the cushioning device: Metal grommets on the corners may be a finger trap hazard.
- Periodically, check the cover and components for damage, and replace if necessary.
- DO NOT expose the product to high heat, open flames or hot ashes. Testing or certification claims, including for flammability, may no longer apply to this device when it is combined with other products or materials. Check testing and certification claims for all products used in combination with this device.



Cautions:

- Keep the cushioning device away from sharp objects.
- DO NOT allow the cushioning device to come into contact with oil-based lotions or lanolin. They may degrade the material.
- Changes in altitude may require adjustment to a DRY FLOATATION cushioning device.
- Prolonged exposure to ozone may degrade materials used in the cushioning device, affect the performance of the product, and void the product warranty.
- Do not use an inflation valve as a handle for carrying or pulling the product. Carry the product by the cushion base or by the carrying handle on the cover. Use of any other components to carry or pull the cushion may damage the product.
- If a DRY FLOATATION cushioning device has been in temperatures lower than 32°F (0°C), and exhibits unusual stiffness, allow the cushioning device to warm to room temperature.
- Do not use a pump, cover or repair kit other than those compatible with the product.

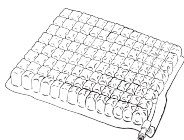
Parts Detail

Package Contents: All products featured in this manual include an operation manual, product registration card, cover, repair kit and hand pump.

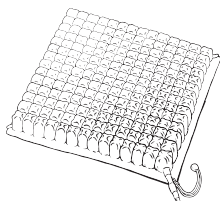
The serial number label is located on the bottom of the cushion.

To order replacement parts, contact the equipment provider or Customer Support.

PACK-IT



MINI-MAX



Recliner System



Hand Pump



Repair Kit

Product Specifications

MINI-MAX:

height: 1¼ in. (3 cm);
width range: 15 to 20½ in. (38.5 - 52 cm)
depth range: 14¾ to 20¼ in. (37.5 - 51.5 cm)
average weight*: 2¼ lb. (1 kg)

PACK-IT:

height: 1¼ in. (3 cm); width: 16¼ in. (41.5 cm);
depth 9½ in. (24 cm)
average weight*: 1½ lb. (0.7 kg)

* Based on mid-sized cushioning device.

1 in. = 2.54 cm = 25.4 mm

Recliner

Cushion: Contact Customer Care for specifications.

Cushion expected lifetime: 5 years

Materials:

Cushioning devices: neoprene rubber (made without latex); Zytel valves


Covers: Standard: two-way stretch top, spacer fabric sides. Heavy Duty: two-way stretch, fluid-resistant top and sides. Standard and Heavy Duty Covers: zipper or snaps and a non-skid bottom. Refer to the cover care label for material content and for compliance to flammability requirements. Elastic strap and metal ring included on the PACK-IT Cover.

MINI-MAX and PACK-IT

Warnings:

- CHECK INFLATION! After atmospheric adjustment, confirm that there is NO CONTACT between the individual and the base of the cushioning device. If there is contact, add air.
- When possible, use hook and loop fasteners to further secure the cushion to the seating surface. Hook fasteners are available upon request.

Inflate to atmospheric pressure:

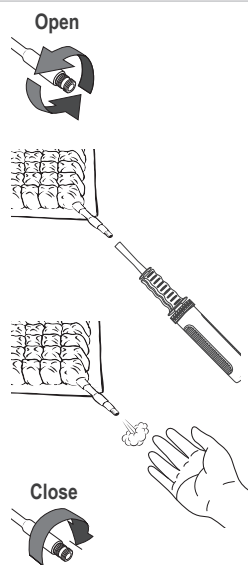
 **Warning:** DO NOT place any weight on the cushion during atmospheric inflation.

Notes: To open, turn at least one full rotation. You can use the hand pump nozzle to open the inflation valve.

1. Open the inflation valve. Inflate with the hand pump until all of the air cells feel firm.
2. Remove the hand pump. Leave the inflation valve OPEN.
3. Allow air to escape from the inflation valve. Listen (or place a hand in front of the inflation valve) to see if the airflow has stopped.
4. After the airflow has stopped, CLOSE the inflation valve completely. The cushion is now inflated to atmospheric pressure.

Placement:

5. Place the cushion on the surface, making sure the air cells face the individual.



Cover Removal and Replacement

Cover Removal: Unzip the cover and remove the cushion.

MINI-MAX Cover Replacement: Insert the cushion into the cover. Pull the inflation valve and Yellow Rope through a corner opening.

PACK-IT Cover Replacement: Insert the PACK-IT into the cover. Close the zipper.

Note: If used, hook fastener strips that were removed prior to washing should be replaced.

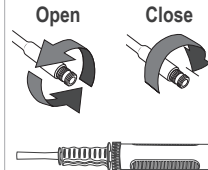
Recliner System

1. Place the Recliner System on the chair with the air cells facing up and the non-skid surface of the cover facing the chair seat and chair back.



Warning: When possible, use the hook or loop fasteners to further secure the cover to the seating surface. On the back cushion, hook and loop fasteners are located inside the cover and on the back of the cushion.

2. Slide the hand pump nozzle over the inflation valve. Open the inflation valve, at least one full rotation. Inflate until all of the air cells feel firm. Close the inflation valve until it comes to a stop. Remove the hand pump. Make sure the inflation valve is closed. Repeat for all inflation valves.
3. Confirm that the individual is in their usual position. Confirm correct placement of the Recliner System.
4. Slide your hand between the cushion and the individual and feel for bony prominences. With your hand in place, open the inflation valve, releasing air as prescribed. Close the inflation valve. Repeat for all inflation valves.



The seated figure shows standard orientation.



Warning: CHECK INFLATION! Make sure that there is at least ½ in. (1.5 cm) of air between the cushion base and the individual's bony prominences. Follow the prescriber's recommended inflation levels.

Cover Removal and Replacement

Cover Removal: Unsnap and remove the covers from the cushions.

Cover Replacement:

1. The zipper on the Back Cushion cover should be closed. For the Seat Cushion and Back Cushion: The non-skid cover material should face up and the snapped opening of the cover should face you. The air cells should face down: Insert each cushion into its cover, inflation valve(s) first. Pull the inflation valve(s) and Yellow Rope through the corner opening(s). The inflation valves will protrude at the front of the Seat Cushion and at the top of the Back Cushion.
2. Place the two cushions with the snapped openings next to each other. Snap the Back Cushion to the Seat Cushion. Snap the bottoms of the covers together. Turn the cushions over so the air cells face up. Snap the tops of the covers together. The cushions should lie flat inside the covers.

Cleaning and Disinfecting

Warnings:

- Cleaning and disinfecting are separate processes. Cleaning must precede disinfection. Before use by a different individual: clean, disinfect, and check product for proper functioning.
- Clean the product regularly and when it becomes soiled.
- Follow all manufacturer bleach container and germicidal disinfectant safety guidelines.
- Note about sterilization: High temperatures accelerate aging and will damage the product assembly. The products featured in this manual are not packaged in a sterile condition, nor are they intended or required to be sterilized prior to use. If institution protocol demands sterilization: First, follow the cleaning and disinfecting instructions; then, open the inflation valve and use the lowest possible sterilizing temperature, but not to exceed 70°C (158°F), for the shortest time possible. DO NOT autoclave.

Recommendation: When washing by hand, use room-temperature water.

Cover Care: Remove hook fastener pieces from bottom of cover prior to cleaning and disinfecting. For the cover on the Recliner System back cushion: Turn the cover inside out, close the zipper and snaps. Wash with like colors.

To Clean the Cover: First remove the cover from the cushioning device. Machine wash cold with mild detergent, gentle cycle, or wipe clean with neutral detergent and water. Tumble dry low or air dry.



To Disinfect the Cover: Hand wash, using 1 part household liquid bleach per 9 parts water. Keep the product wet with the bleach solution for 10 minutes, then rinse thoroughly. Or machine wash in hot water (60°C). Tumble dry low or air dry.



Cleaning and Disinfecting, continued

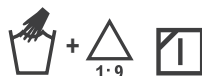
! Cushion Care Cautions: DO NOT allow water or cleaning solution to enter the cushion. DO NOT machine wash or sanitize the cushion or machine dry the cushion. Use of the following may cause damage to the cushion: abrasives (steel wool, scouring pads); caustic, automatic dishwasher detergents; cleaning products that contain petroleum or organic solvents, including acetone, toluene, Methyl Ethyl Ketone (MEK), naphtha, dry cleaning fluid, adhesive remover; oil-based lotions, lanolin; ozone gas; ultraviolet light cleaning methods. DO NOT expose to direct sunlight.

To Clean the Cushion: Remove the cover and close the inflation valve. Hand wash, using mild liquid hand soap, hand dishwashing liquid, laundry detergent, or a multipurpose detergent (Follow product label instructions.) Gently scrub all cushion surfaces, using a soft plastic bristle brush, a sponge or a cloth. Rinse with clean water. Air dry.



! Caution: Rinse thoroughly. Detergent residue may cause air cells to stick together.

To Disinfect the Cushion: Repeat cleaning instructions, using 1 part household liquid bleach per 9 parts water. Follow the safety guidelines on the bleach product label. Keep the product wet with the bleach solution for 10 minutes. Rinse thoroughly with clean water. Air dry.



Care Symbols



Hand wash.



Bleach (1 part bleach: 9 parts water)



Machine wash hot, normal, maximum temperature shown.



Machine wash gentle, cold.



Line dry in the shade.



Tumble dry low.

Troubleshooting

For additional assistance, contact the equipment provider, distributor, or Customer Support.

Not Holding Air:	Inflate the cushion. Confirm that the inflation valve is completely closed. Look for holes in the cushion. If very small holes or no holes are visible, follow the instructions in the Repair Kit provided with the product. For inflation valve or hose damage, or for large holes or leaks in the cushion, see the Limited Warranty supplement, or contact Customer Support.
Uncomfortable or Unstable:	Check the inflation level (see the product instructions). Confirm that the air cells and the top of the cover face the individual. Confirm that the cushioning device is not too big or too small for the surface. If the cushion still feels uncomfortable or unstable after checking all of the above, immediately consult the prescribing healthcare professional.
Cushioning Device Slides:	Make sure the non-skid bottom of the cover is facing away from the individual. Confirm that the hook and loop fasteners or snaps are securely fastened. When possible, use hook and loop fasteners to further secure the cushion to the seating surface. Hook fasteners are available upon request.

Storage, Transport, Disposal and Recycling

Storage or Transport: Clean and disinfect the product. Open the inflation valve. Place in a container that protects the product from moisture, contaminants and damage.

After storing or transporting, inspect the product to ensure it was not damaged (see "Troubleshooting"), and follow instructions to prepare the product for use.

Disposal: The components of the products in this manual are associated with no known environmental hazards when properly used and when disposed of in accordance with all local/regional regulations. At the end of its useful life, treat as healthcare waste and dispose of according to local healthcare-waste guidelines. Incineration must be performed by a qualified, licensed waste management facility.

Recycling: Contact a local recycling agency to determine recycling options for the product.

Limited Warranty

Limited Warranty Term: 24 months from the date the product was originally purchased. The warranty does not apply to punctures, tears, burns, or misuse, nor does it apply to the removable cover. See also the Limited Warranty supplement provided with the product, or contact Customer Support.