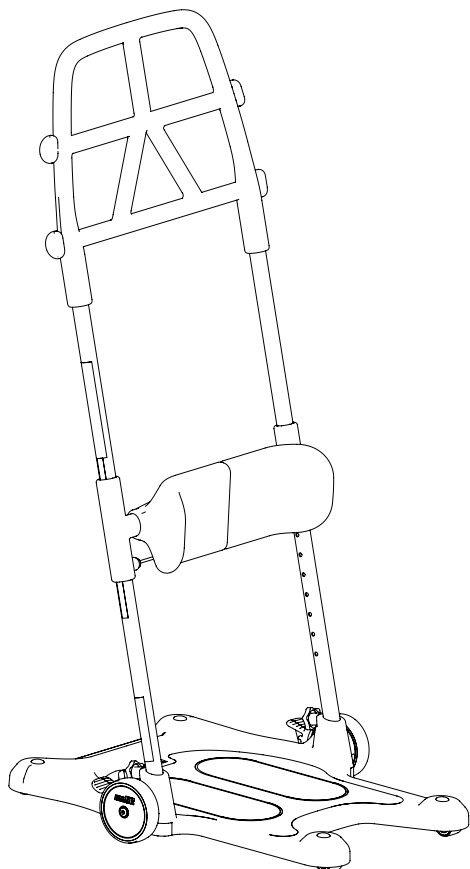


Raiser Pro

Reconditioning

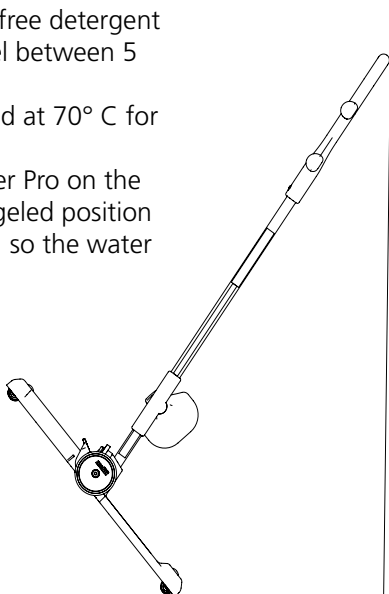
molift®
by Etac

EN



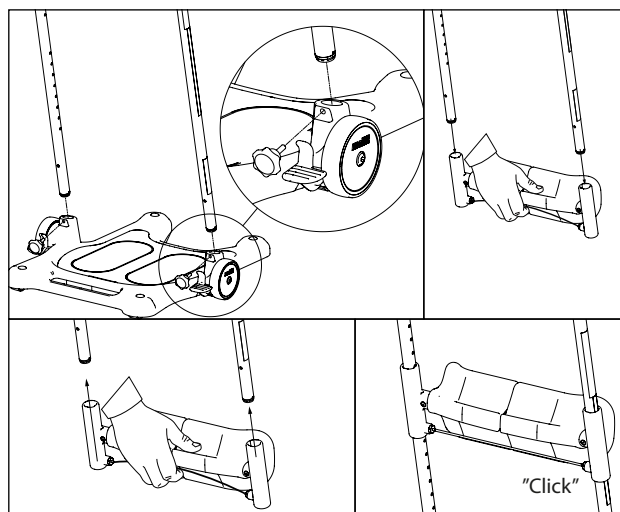
1 Manuell / disinfectant washing

- Use a solvent-free detergent with a pH level between 5 and 9.
- Can be washed at 70° C for 10 minutes.
- Place the Raiser Pro on the floor in an angled position after washing, so the water runs out.



2

Leg support

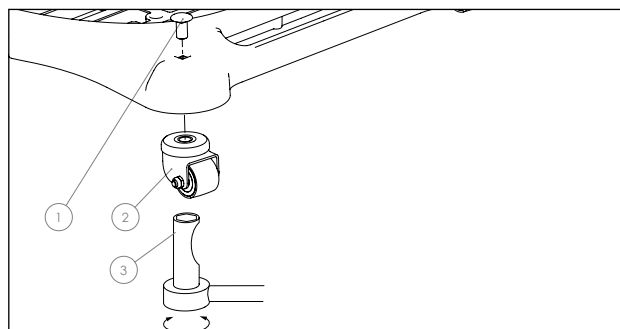


If leg support is damaged or worn out:

- Unscrew both knobs.
- Separate handle and pipes from main plate.
- Pull release wire and slide leg support off the pipes.
- Pull release wire on new leg support. Insert the leg support. Release wire and make sure leg support lock are engaged.
- Mount handle with pipes into main plate, insert knobs and tighten.

3

Castors



If castor are damaged, turn or rolls porly:

- Unscrew castor (2), using tool (3) (art:28465)
- Replace bolt and castor (1) (2)
- Screw inn new castor, using tool (3) (art:28465). Tighten aprox 14Nm.

Raiser Pro

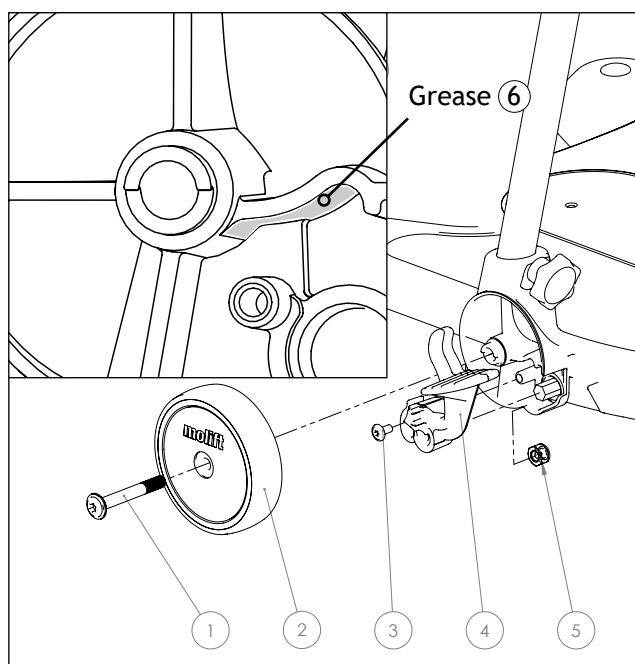
Reconditioning

molift[®]
by Etac

EN

4

Brake/wheel



If pedal is broken or has a weak spring:

- Unscrew bolt (1) (use 5 mm allen key), remove wheel (2) and nut (5)
- Unscrew screw (3) (use torx TX25), and pull out pedal (4)
- Clean old grease and dirt
- Apply grease (art:28473) on aluminum plate (6)
- Install new pedals and screws. Tighten screw (3) approx 6Nm.
- Reassembly wheel with the molift logo horizontally on the top of the wheel, tighten bolt (1) 13Nm

If brake does not lock or snap function is poorly or defect due to dirt or lack of grease:

- Unscrew bolt (1) (use 5 mm allen key), remove wheel (2) and nut (5)
- Wipe clean old grease and dirt.
- Apply grease (art:28473) on aluminum plate (6)
- Reassembly wheel with the molift logo horizontally on the top of the wheel, tighten bolt (1) approx 13Nm

If wheel are damaged or rotates poorly:

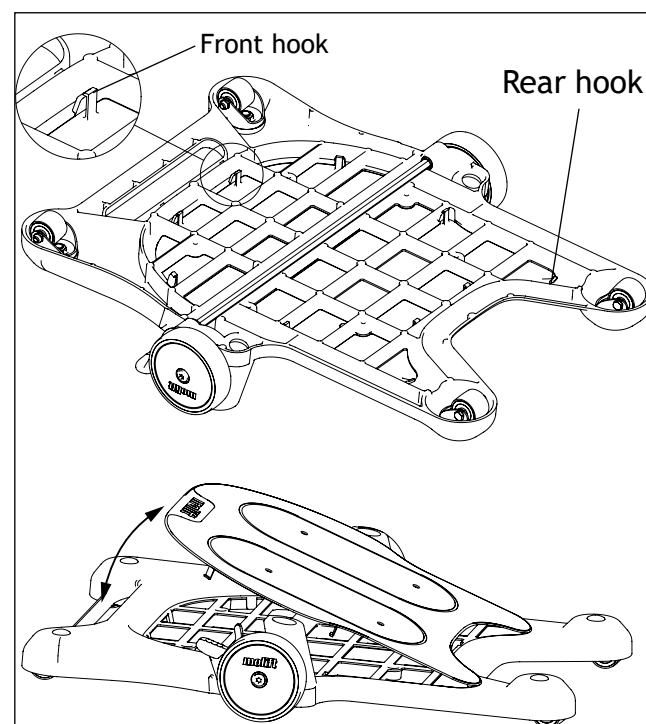
- Unscrew bolt (1) (use 5 mm allen key), remove wheel (2) and nut (5)
- Use new bolt and nuts when installing new wheel.
- Reassembly wheel with the molift logo horizontally on the top of the wheel, tighten bolt (1) 13Nm

5

Footplate

If footplate is defect or need to be loosen for washing:

- Lay Raiser Pro upside down and flip out all 8 hooks. Start from front to back. Footplate will fall out.
- Install new/cleaned footplate by placing rear hooks in position and rotate footplate into position.
- Press footplate into position



Original spare parts from Etac should always be used.